



# BOUNDLESS CONNECTING ARTISTS

A broad and eclectic range of work, including photography, abstract painting and cartoons, much of it by artists who have led lives far removed from the mainstream of society, goes on show in London.

Thames Pathway by Claire Wiltsher

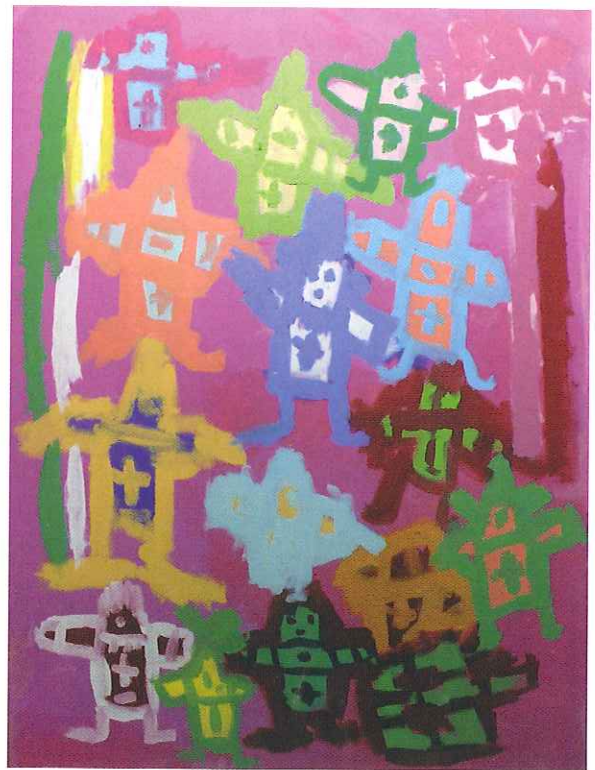
People by Joy Reid

**B**oundless makes a statement that all of us, disabled or not have the right to make and enjoy art, and that this right, which is integral to our humanity, connects us one to another.

The project was conceived by Steven Rose, the Chief Executive of a learning disabilities charity called Choice Support, after he attended an exhibition of art by people with learning disabilities; although the work on display was of a high standard, only the artists themselves and a scattering of their families and carers attended the exhibition. Rose saw this as an example of the 'invisibility' of people with learning disabilities, one of the most marginalised groups in our society. The idea behind Boundless is to introduce the work of learning disabled artists to the wider artistic community, by exhibiting them in a prominent London gallery, alongside non-disabled artists.

Learning-disabled artists across the country were invited to submit work for the exhibition which will be judged on merit by a small panel of professional artists. This panel has selected several learning-disabled artists, and will select more in the near future to exhibit alongside established professional artists. The learning-disabled artists chosen so far include an illustrator and a cartoonist, to people who were first introduced to art in a therapeutic environment.

Boundless is being supported by four leading learning disability agencies, Choice Support, United Response, Regard Partnership and the Skillnet Group, and includes amongst other artists work by Steven Chapman, Louise Kidd, Jamie



Forrester, Simon O'Bree and Paul Hoffmyer-Bembridge who are Fearless Photography. They formed a year ago and are based in Kent.

Brendan Keeley aged twenty-one years, has been working as a freelance cartoonist and illustrator for the past two years. His work has appeared in a number of national and international magazines. Brendan left school at the age of fourteen, due to problems caused by undiagnosed Asperger's Syndrome and dyslexia. He continued to study for his exams at home in the moments when he wasn't drawing or collecting recordings of 1940s radio broadcasts. An official diagnosis at the age of eighteen did not deter him from pursuing his goals.

Joy Reid's paintings have evolved from small felt tip pen drawings of people to colourful abstract pictures. She spends an hour every week painting in a studio in the garden of Choice Support's Southwark office and also has a studio in her flat. Joy's work has previously been exhibited in galleries near her home.

Claire Wiltsher's work deals with landscape and environments, and her intention is to create the energy and atmosphere of the places that inspire her. Claire believes that total recognition inhibits the imagination, so she wants the viewer to be involved. Oil paint and sections of collage are worked together into the image to create alchemy.

*Boundless – Connecting Artists runs 21 July - 27 July at Bankside Gallery, 48 Hopton Street London SE1 9JH [www.banksidegallery.com](http://www.banksidegallery.com)*